

17

32

SW 1/4 Corner SEC 2-78-4

FOREST

GROVE

N. line SW 1/4 SEC 2-78-4

ROAD

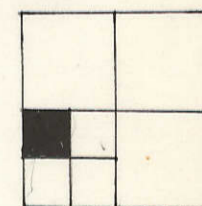
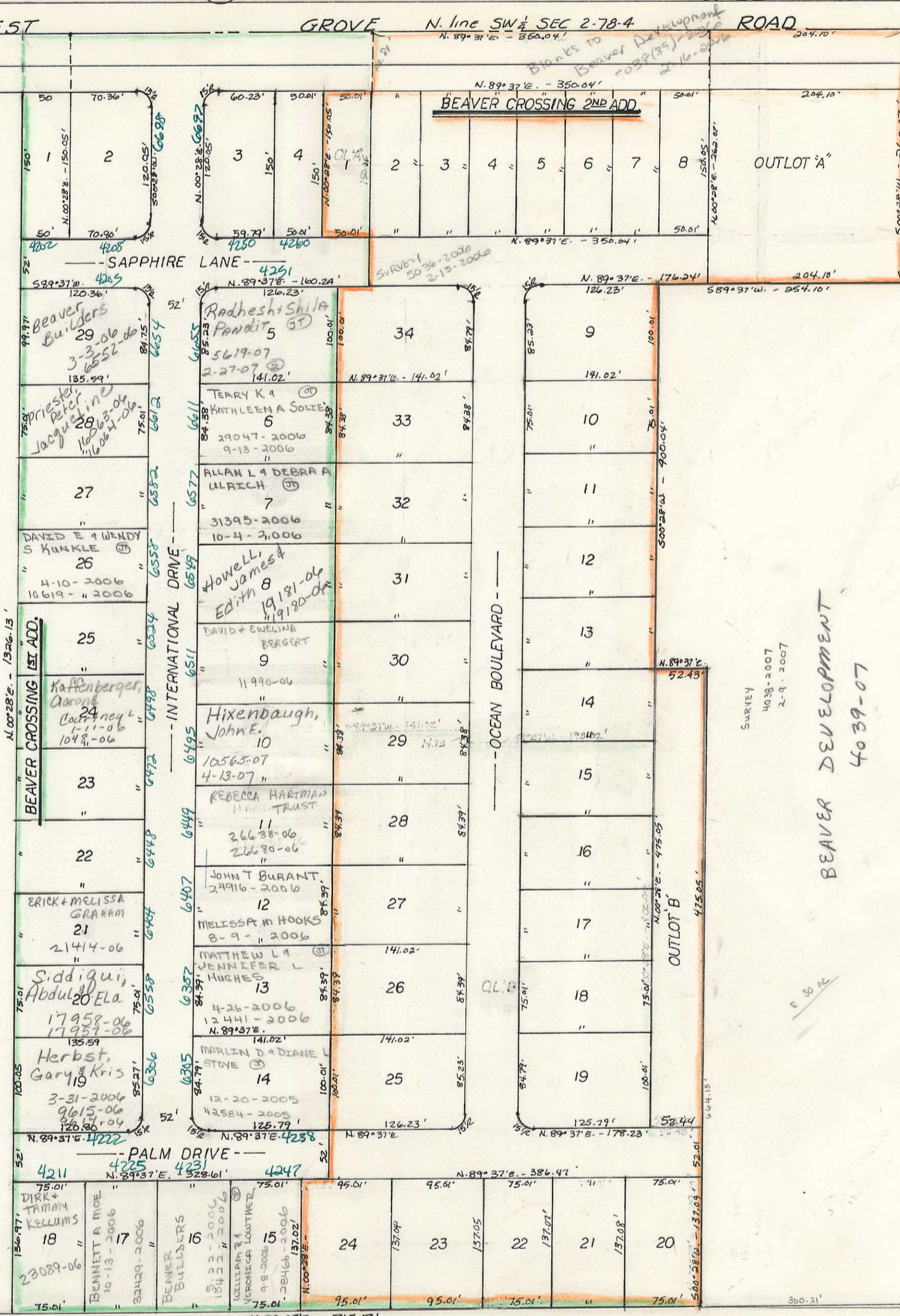
CHARLES & PHYLLIS
PFITZENMEIER
5-25-73

SEC 3

39

Section line between SECS 2 & 3

10 AC



35

49

SURVEY
2326-2005
3-21-05